

eLux NG → eLux RL Migration

July 2009
Build # 1

Contents:

1 Migration from eLux NG to eLux RL via Firmware Update 1

- 1.1 Requirements 1
- 1.2 Procedure 1
- 1.3 Potential Errors 3

© 2009 UniCon Software GmbH. All rights reserved

Information in this document is subject to change without notice. No part of this document may be reproduced or transmitted in any form or by any means, electronic or mechanical, for any purpose, without the express consent of UniCon Software GmbH.

eLux is a registered trademark of UniCon Software GmbH in Germany. All other Trade Names referred to are the Servicemark, Trademark or Registered Trademark of the respective manufacturers.

The end user takes full responsibility for his or her actions. Neither UniCon Software GmbH nor its partners assume liability for any errors or damage resulting from the information contained herein.

1 Migration from eLux NG to eLux RL via Firmware Update

The procedure described here enables the migration from eLux NG to eLux RL via the comfortable firmware update. Thus the migration is scalable and comprehensible even for a large number of systems, considering the hardware requirements of the individual devices.

1.1 Requirements

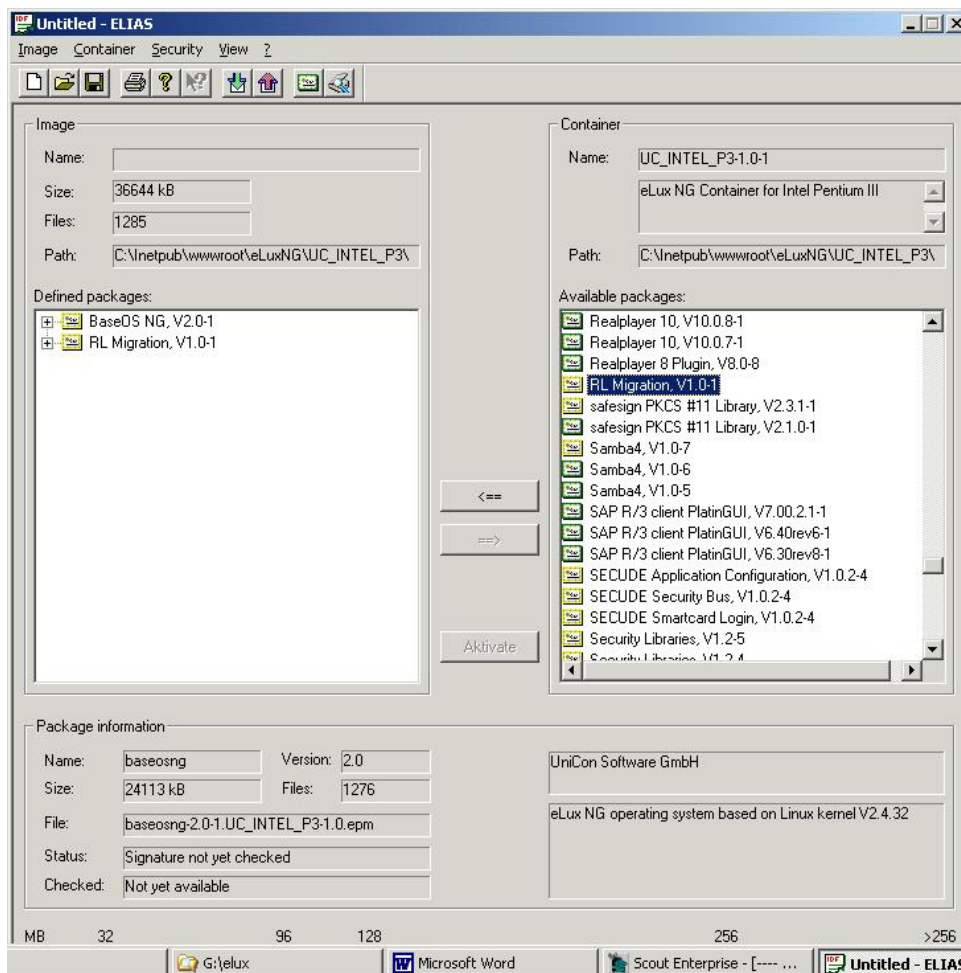
- Thin Client with eLux NG
- Knowledge about the procedure of the firmware update, ELIAS via Scout.
- Thin Client Hardware: at least CPU 500 MHz, RAM 256 MB, Compact Flash 128 MB and an up-to-date CPU
- Scout Enterprise Server Version 11
- eLux NG BaseOS 2.0-1 or higher
- eLux RL BaseOS 2.0.0-1 or higher
- FTP- or HTTP-Server with UC_RL-Container

The stepwise migration procedure described here requires that you are familiar with creating image definition files (IDFs) by means of the tool ELIAS.

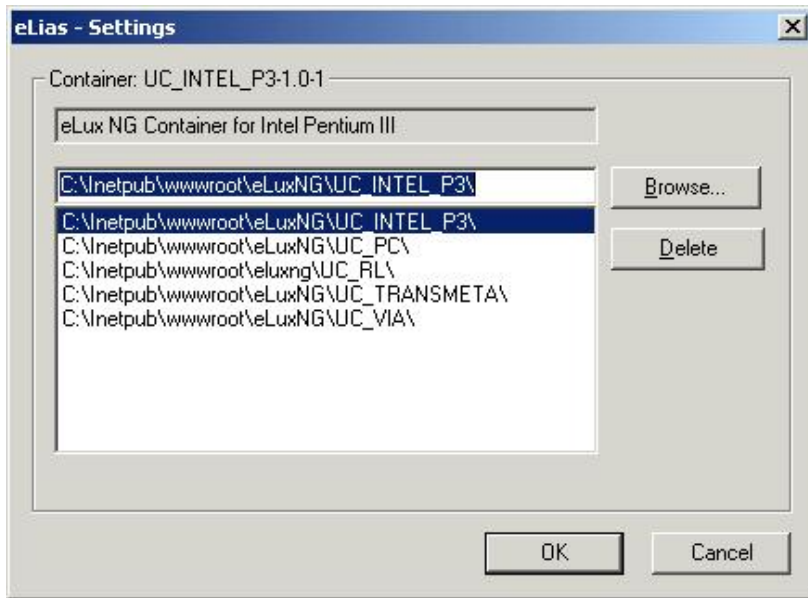
If necessary, you find detailed information in our manuals about eLux, Scout and ELIAS on our website <http://www.mylux.com/>.

1.2 Procedure

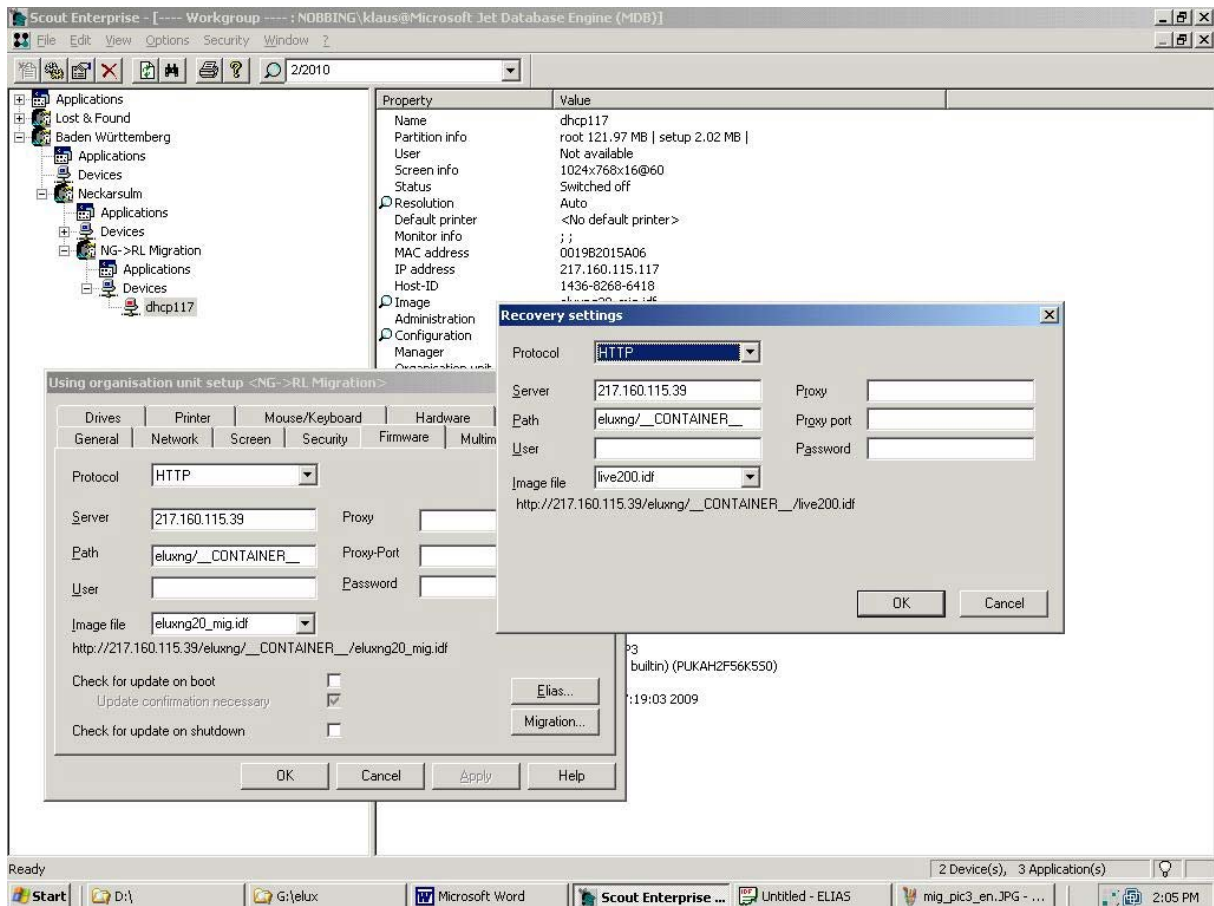
- 1.) Download the **baseosng-2.0-1** and the RL migration package from www.mylux.com and import both into your eLux NG container (UC_INTEL_P3, UC_VIA resp. UC_PC).
- 2.) Define an eLux NG image with BaseOS 2.0 or higher and include the RL migration package. Save the image definition file.



- 3.) Download the target container eLux RL from www.mylux.com and save the container in the same subdirectory as your eLux NG container naming it **UC_RL**.
- 4.) Extend the ELIAS settings in Scout (Options → ELIAS Settings) by the new UC_RL container.



- 5.) In Configuration > Firmware enter the name of the new Image Definition File for the eLux NG Image.
- 6.) Create new parameters for the eLux RL target image in Configuration > Firmware > Migration. The macro `__CONTAINER__` will be resolved to UC_RL for the migration settings.



7.) Initialize a firmware update via Scout.

On success first there will be an update to the new NG image and then, automatically, the update to the target image with eLux RL will be done.

1.3 Potential Errors

On principle, all error messages are displayed in the update log of the Scout server.

1) The target image definition file for RL has not been found:

http request failed: rc=0, ec=404 (File not found)

http request failed: rc=0, ec=404 (File not found)

URL: http://217.160.115.39/eluxng/UC_RL/eluxRL.idf

Please check your settings in Configuration > Firmware > Migration

2) Insufficient Main Memory

Error: insufficient memory 128MB (expected 256MB)

Your Thin Client requires at least 256 MB RAM

3) CPU too slow

Error: CPU clock speed too slow

At least 500 Mhz are required

4) CPU too old

Error: CPU too old

Transmeta processors, NSC processors, and older VIA processors are no longer supported with eLux RL.

5.) Grafical problems after a successful migration may occur with older PCs and Thin Clients (> 5 years).

In case of a migration from eLux NG for PC to eLux RL for PC we recommend to evaluate eLux RL on your PC in the first step. We cannot assume for sure that your PC will run with eLux RL, even if CPU, RAM and clock speed of the processor seem to be sufficient. Besides, Scout V11 also provides the complete management of systems with eLux NG.

6.) There is no way to downgrade to eLux NG from eLux RL by firmware update. If necessary you need to perform a recovery procedure for your system.

For further details see our Recovery Paper on www.myelux.com.